



BENTLEY PARK

PREMIUM APARTMENTS



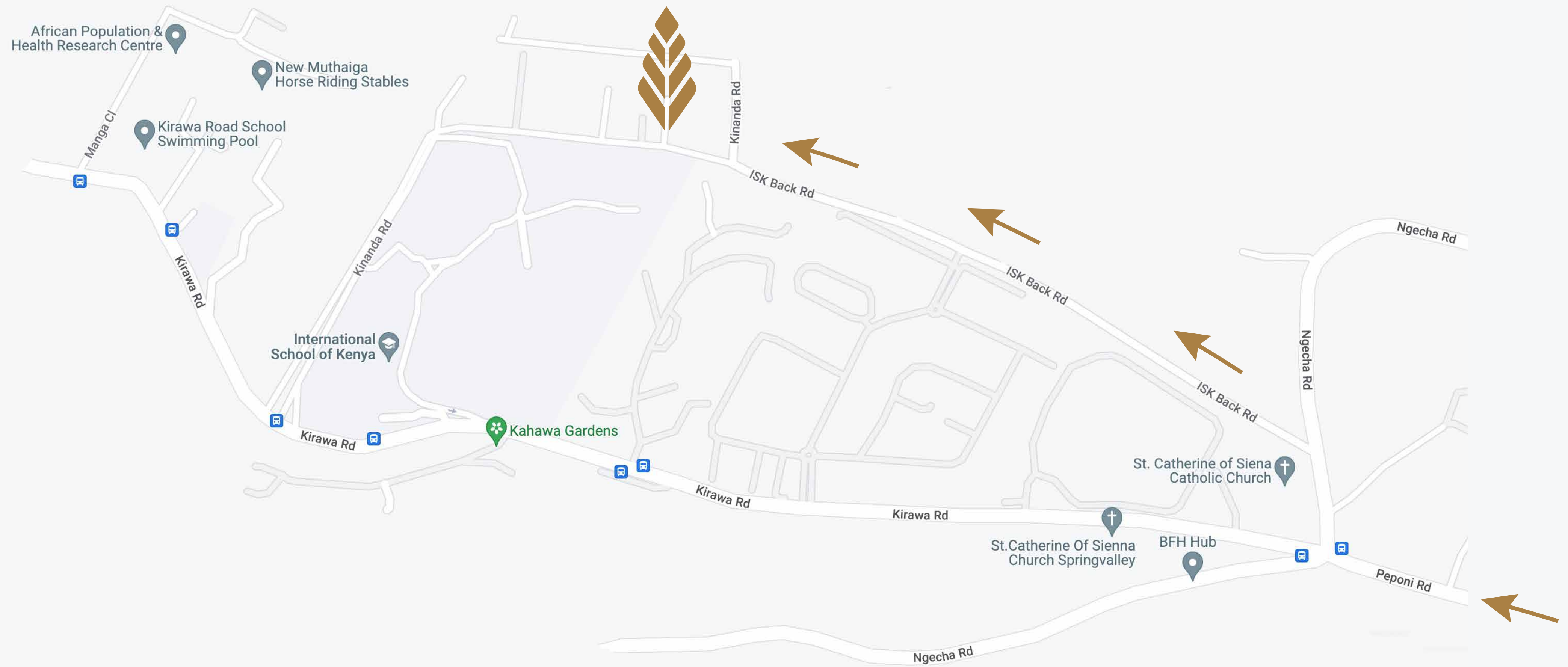
BENTLEY PARK PREMIUM APARTMENTS

Designed by American Architecture firm DLR Group

Welcome to Bentley Park. Designed by American architecture firm DLR Group, this boutique collection of only sixteen apartments is nestled on a picturesque valley side in a secluded corner of Kitisuru, Nairobi.

BENTLEY PARK

Location



PREMIUM APARTMENTS

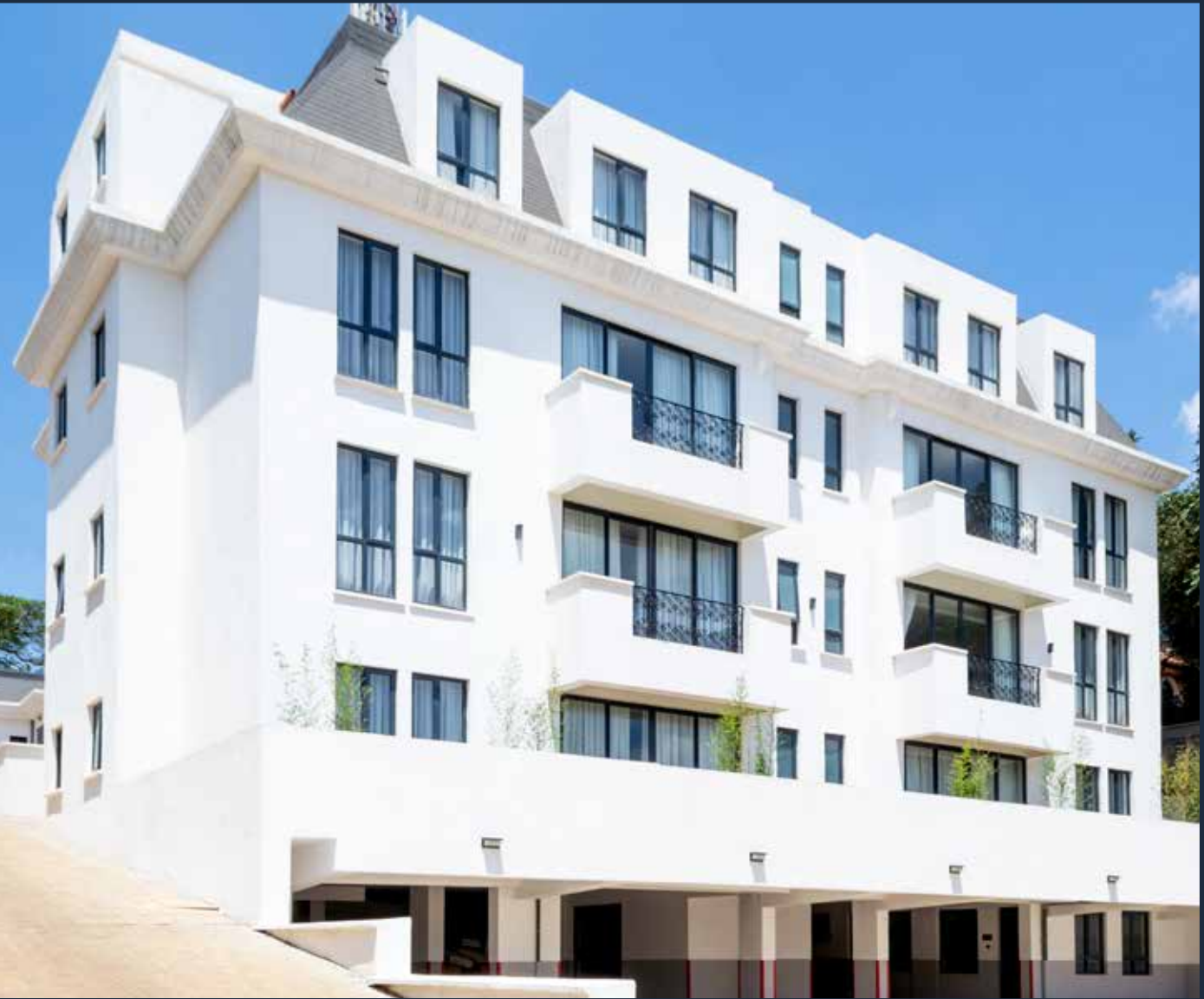
An Address Like No Other

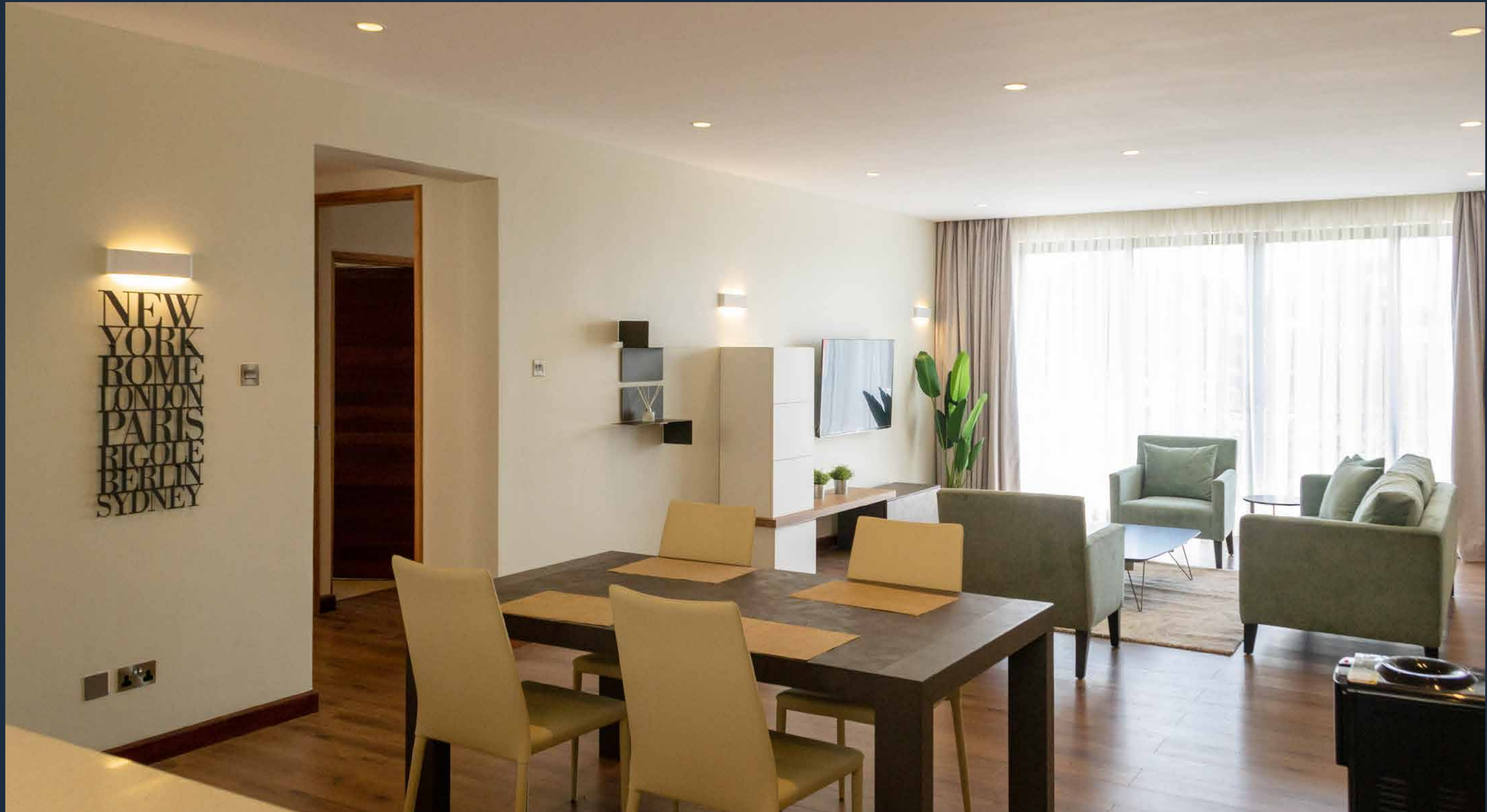
The development is focused around two near containing eight apartments. Each block benefits from access control and the entire in. A total of twenty nine parking spaces on site allow for identical apartment blocks each development has CCTV built an allocation of two per parking spaces per two bedroom apartment and one parking space.

Boasting a total of thirteen two bedroom apartments, this development enjoys easy and convenient accessibility courtesy of the recently completed Westlands Redhill Link Road. Quick access to ABC Place and the diplomatic quarter of Gigiri are both possible via this major road artery. And yet despite the excellent road links, the development is located in a quiet and serene neighbourhood, away from traffic and noise.



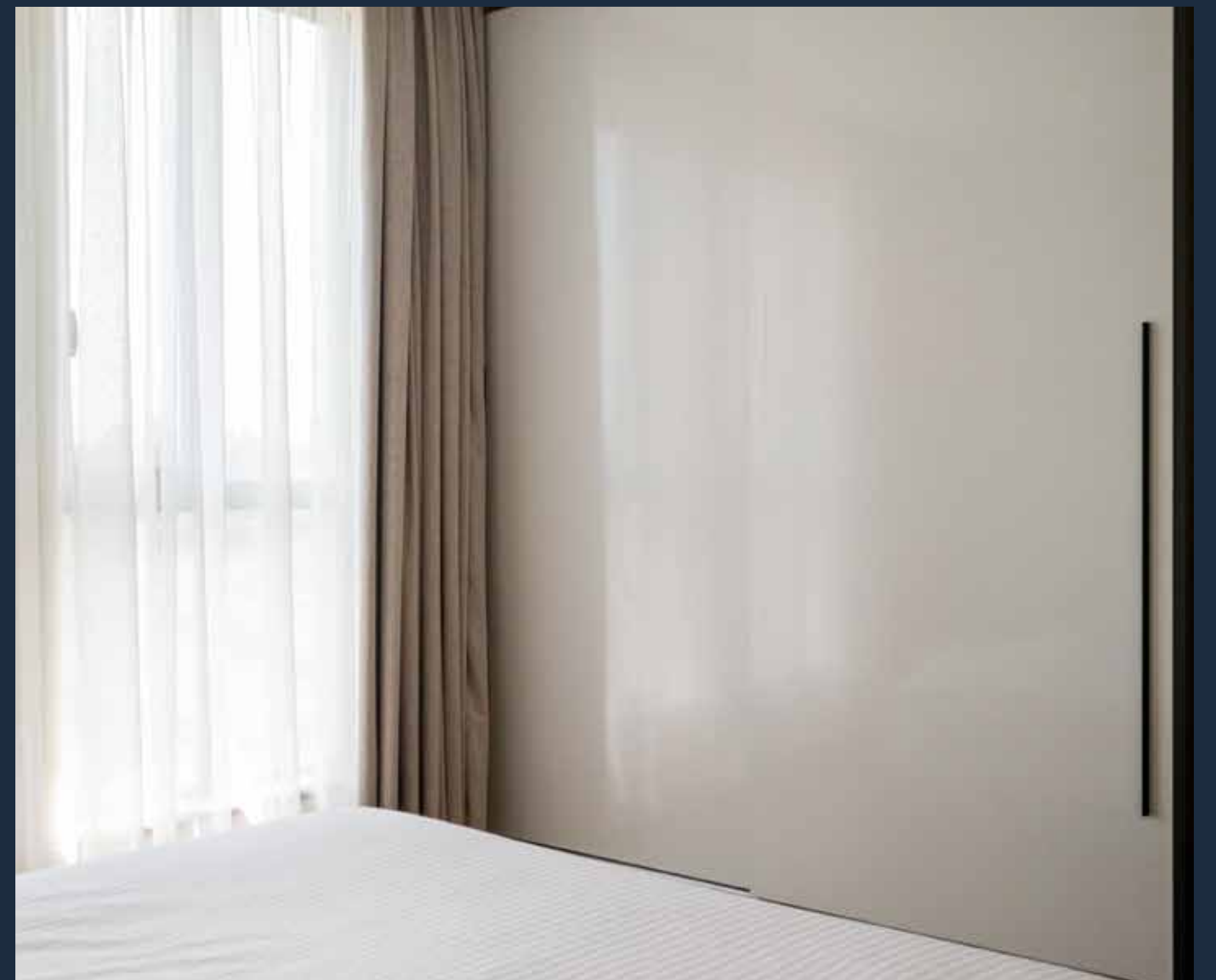
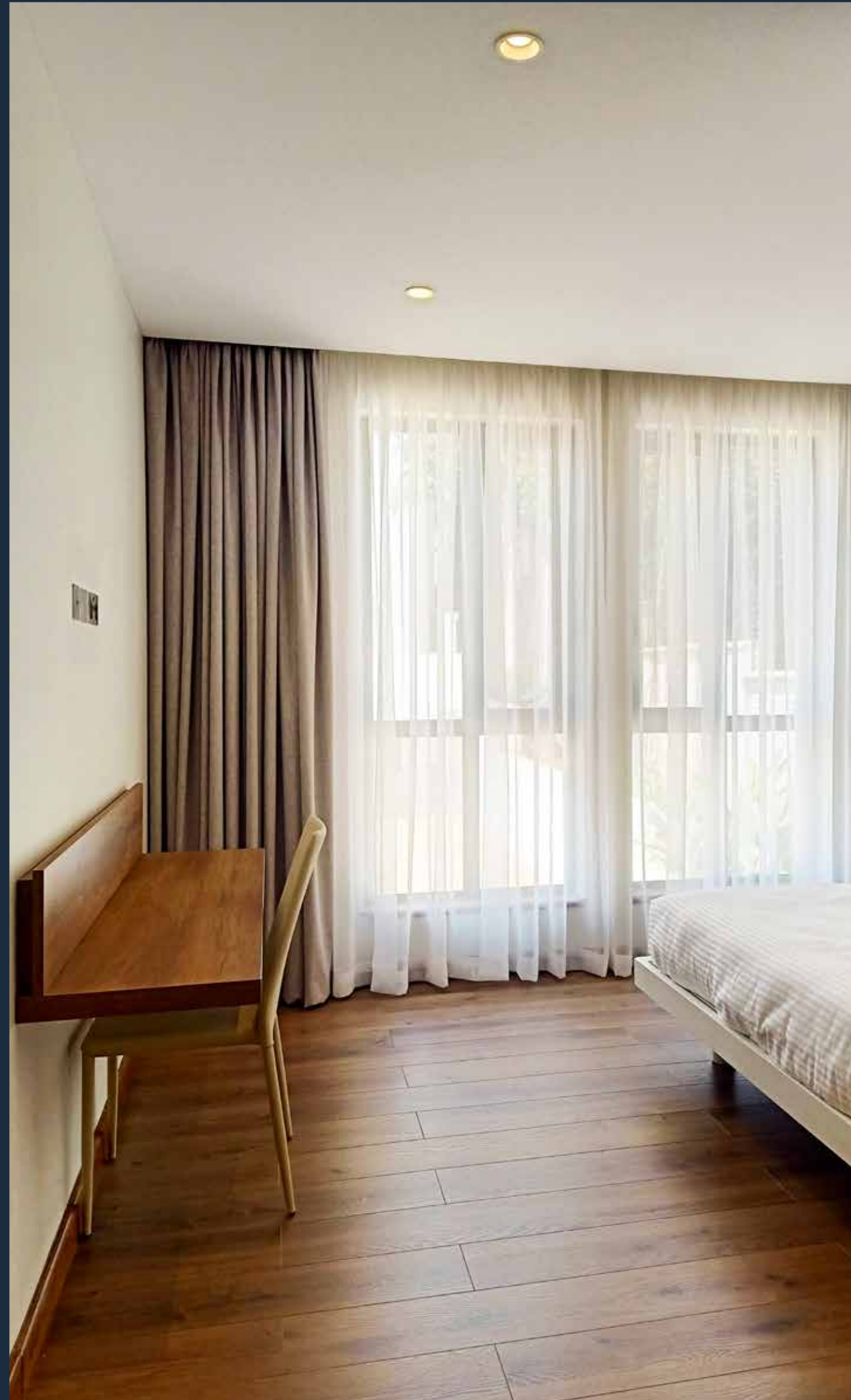












Exquisite Look & Finish

A concerted effort has been made to select the best possible materials to finish Bentley Park. In that regard, each apartment comes with German wooden flooring and fitted Italian kitchens, complete with Bosch integrated appliances. Porcelain tiles adorn the kitchens and bathrooms. The bathrooms feature the world leading TOTO sanitary wares and have imported fitted bathroom vanities with mirrors. The apartments have been designed to give a modern classic look and feel with neutral colours, wood and stone look finishes. The apartments feature gypsum ceilings throughout with downlights. Fitted wardrobes adorn each bedroom. Stunning vistas of the valley below and across will impress residents time and time again. A communal gym will be available for all residents along with generous landscaped gardens. Each block also features a Schindler elevator to make ease of access.

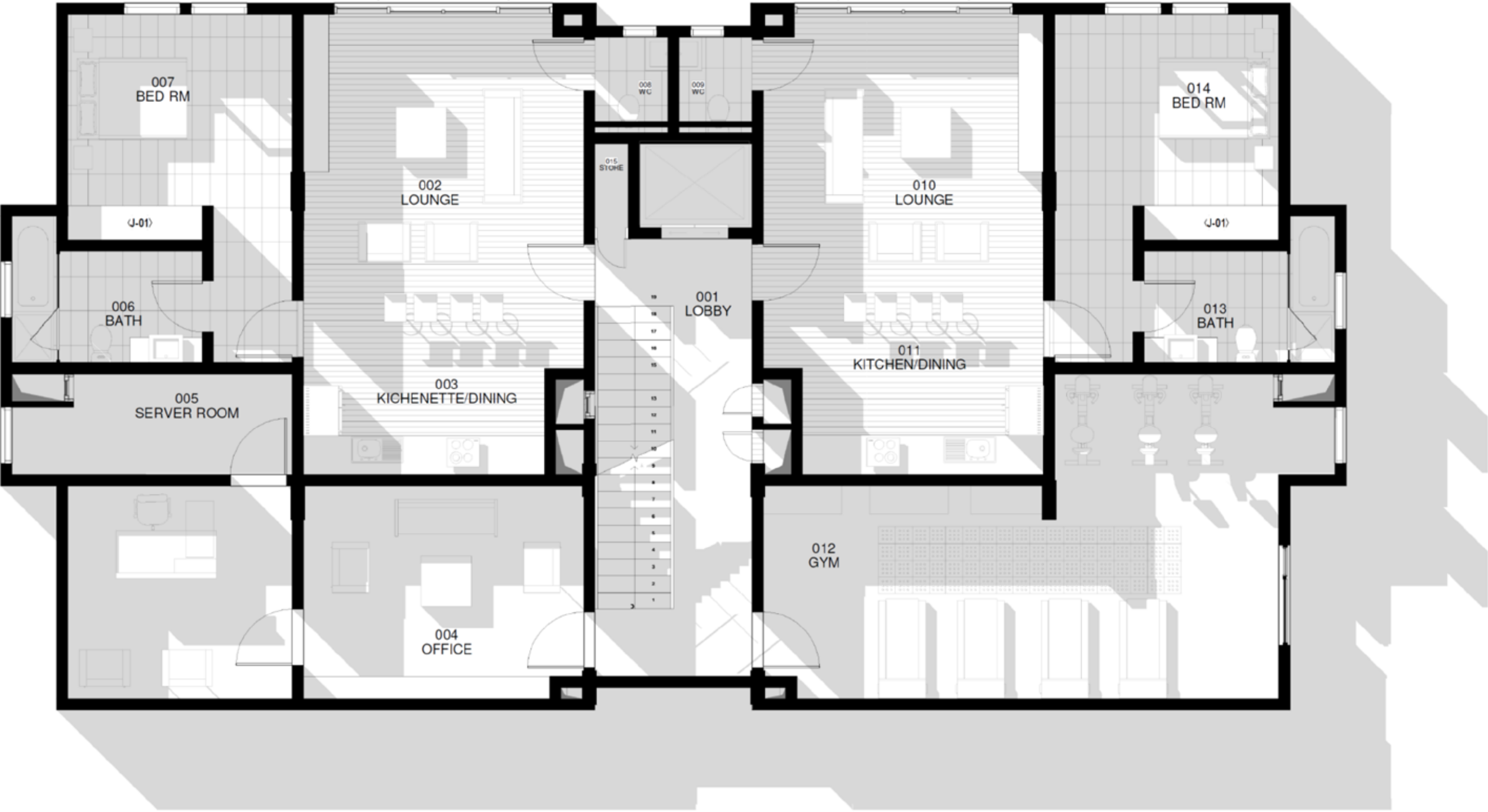
These boutique apartments are one-of-a-kind in the Kitisuru neighbourhood.



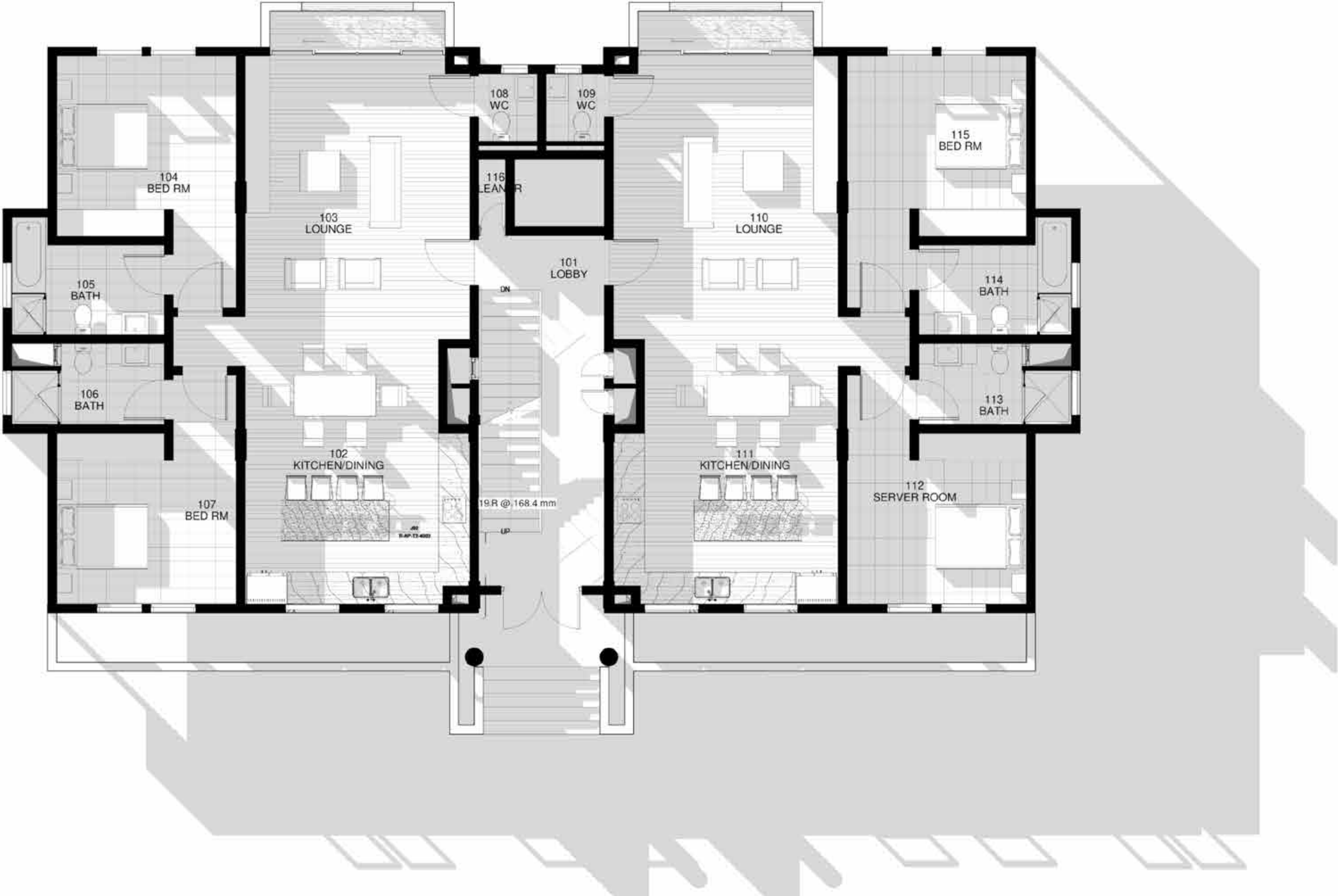
KEY FACTS

- Plot size - 0.8 acres
- 16 apartments
- 29 parking spaces plus additional visitors parking on the exterior
- Italian fitted kitchen with integrated appliances
- Built - in wardrobes
- German wooden flooring
- Gypsum ceilings with downlights
- Video access control and entry
- CCTV and electric fence
- Schindler elevators
- Full generator back-up
- Gym with treadmill, cross-trainer, bike, bench and dumbbells
- 13 two - bedroom apartments
 - 9 two - bedroom apartments 1195 square feet
 - 4 two - bedroom apartments 1076 square feet
- 3 one-bedroom apartments - 732 square feet
- Designed by DLR Group
- Developer Ideal Group - previous developments City Mall, The Residences at General Mathenge, The Greenwood, Emirates Business Park, The Avenue, Nyali Springs, Zawadi Apartments
- Completion - October 2020

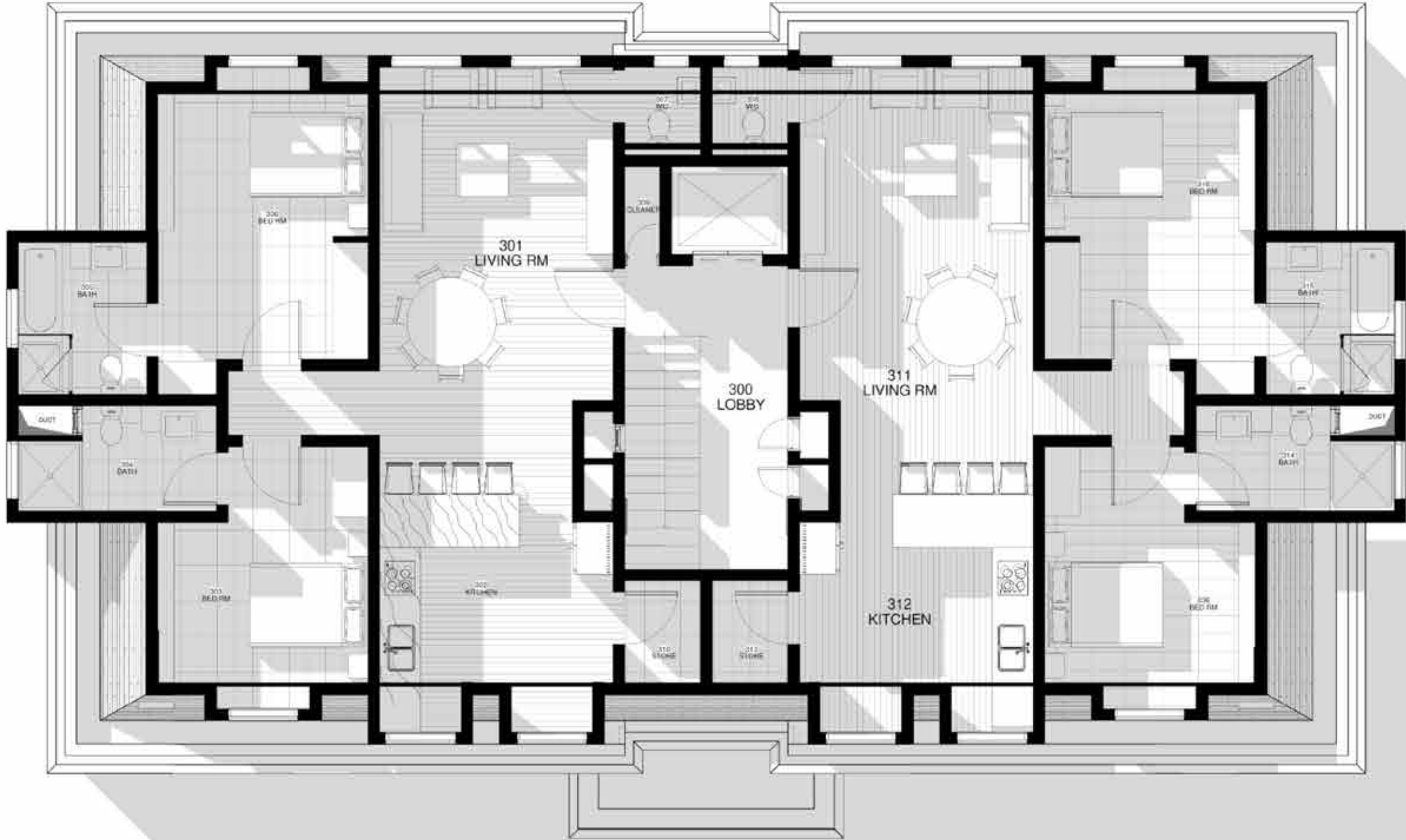
Block A – Level Lower Ground



Block A – Level Ground



Block A – Level Second



Block B – Level Lower Ground



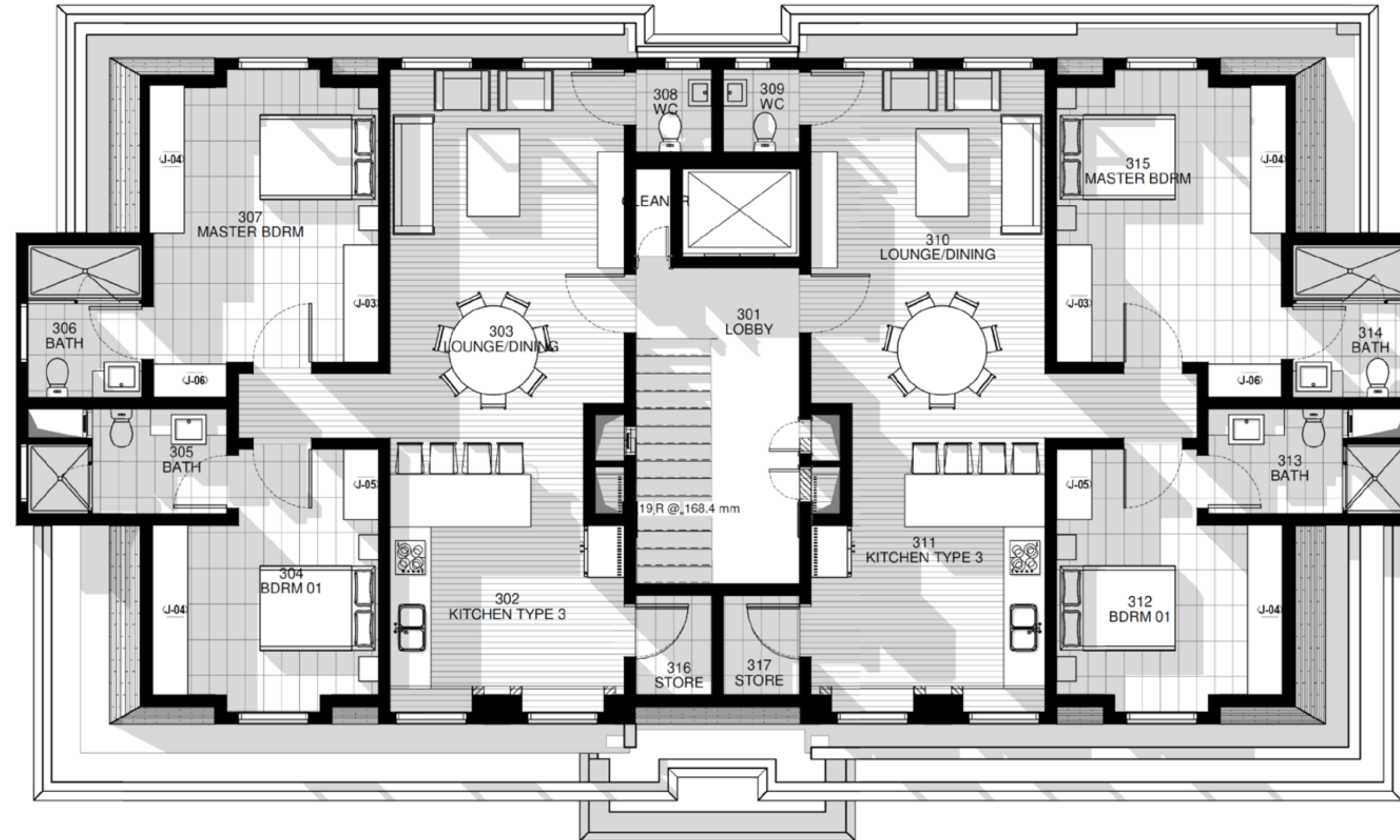
Block B – Level Ground



Block B – Level First



Block B – Level Second



BENTLEY PARK RESIDENCES

All rights reserved © 2022